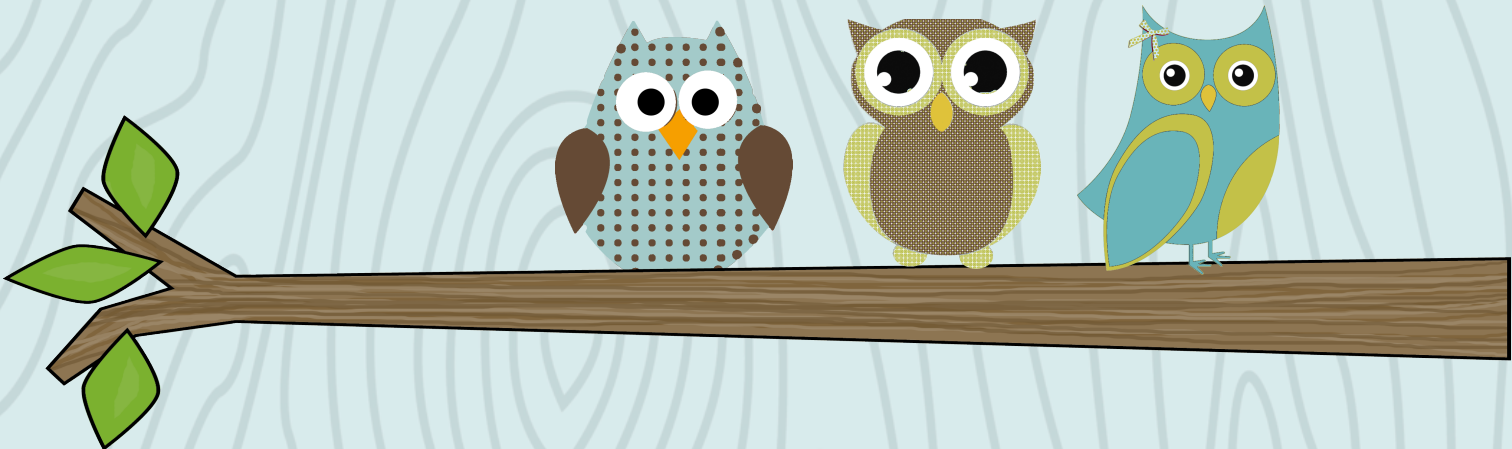


COMMON CORE CHECKLIST
ENGLISH LANGUAGE ARTS
GRADE 6

This packet includes a Planning Checklist with all 6th grade ELA Common Core Standards. There is also room to write dates and brief notes.





Standard	Dates Taught				Notes
Key Ideas and Details					
RL 6.1: Cite textual evidence to support analysis of text, both inferential and explicit.					
RL 6.2: Determine theme/central idea of text and how it is conveyed through particular details.					
RL 6.2: Write an objective summary of text (no opinions or judgments).					
RL 6.3: Describe how a story's plot unfolds and how the characters respond or change.					
Craft and Structure					
RL 6.4: Analyze the impact of a specific word choice on meaning/tone.					
RL 6.4: Determine the meaning of words and phrases in text, including figurative and connotative meanings.					
RL 6.5: Analyze how a particular sentence, chapter, scene, or stanza fits in the overall structure of a text.					
RL 6.5: Analyze how a story's structure contributes to the development of theme, setting, plot.					
RL 6.6: Explain author's development of point of view of characters or narrators in a text.					
Integration of Knowledge and Ideas					
RL 6.7: Compare/contrast reading experience with viewing video, live performance, movie.					
RL 6.8: NA					
RL 6.9: Compare/contrast texts in different forms/genres in terms of their approaches to similar themes/topics.					
Range of Reading Level and Text Complexity					
RL 6.10: By end of year, read and comprehend literature in 6-8 text complexity band proficiently (stories, poems, drama).					



Standard	Dates Taught				Notes
Key Ideas and Details					
RI 6.1: Cite textual evidence to support analysis of text, both inferential and explicit.					
RI 6.2: Determine central idea of text and how it is conveyed through details.					
RI 6.2: Write an objective summary of text (no opinions or judgments).					
RI 6.3: Analyze how a key individual, event or idea is introduced, illustrated, and elaborated in a text.					
Craft and Structure					
RI 6.4: Determine the meaning of words and phrases as they are used in text.					
RI 6.4: Determine the meaning of words and phrases in text, including figurative and connotative meanings.					
RI 6.5: Analyze structure of text- how sentence/paragraph/section/chapter contribute to development of ideas.					
RI 6.6: Determine author's point of view and how it is conveyed in the text.					
Integration of Knowledge and Ideas					
RI 6.7: Integrate information presented in different media/formats to develop.					
RI 6.8: Trace/evaluate the argument and specific claims in a text- which claims are supported by reason/evidence, which are not?					
RI 6.9: Compare/contrast one author's presentation of events with that of another.					
Range of Reading Level and Text Complexity					
RI 6.10: By end of year, read and comprehend nonfiction in 6-8 text complexity band proficiently.					



Standard	Dates Taught				Notes
Conventions					
<u>L 6.1</u> : Ensure pronouns are in the proper case (subjective, objective, possessive).					
<u>L 6.1</u> : Know and use intensive pronouns.					
<u>L 6.1</u> : Recognize and correct inappropriate shifts in pronoun person and number.					
<u>L 6.1</u> : Recognize and correct vague pronouns.					
<u>L 6.1</u> : Recognize variations from standard English in writing and speaking.					
<u>L 6.2</u> : Use commas, parentheses, and dashes correctly.					
<u>L 6.2</u> : Spell correctly.					
Knowledge of Language					
<u>L 6.3</u> : Vary sentence patterns and maintain consistency in style and tone.					
Vocabulary					
<u>L 6.4</u> : Use context as a clue to the meaning of a word or phrase.					
<u>L 6.4</u> : Use Greek or Latin affixes and roots as clues to the meaning of a word.					
<u>L 6.4</u> : Consult dictionaries / glossaries / thesauruses to identify or verify word meanings.					
<u>L 6.5</u> : Interpret figures of speech in context.					
<u>L 6.5</u> : Use the relationship between words to better understand each of the words.					
<u>L 6.6</u> : Acquire and use grade-appropriate words and phrases.					



COMMON CORE STATE STANDARDS FOR ENGLISH LANGUAGE ARTS

CHECKLIST: Grade 6 Standards for Speaking and Listening



Standard	Dates Taught				Notes
Comprehension and Collaboration					
SL 6.1: Engage effectively in a range of collaborative discussions expressing one’s own ideas and building upon others’ ideas.					
- one-one-one					
- group					
- teacher-led					
SL 6.1: Come to discussions prepared, having read/studied material and able to reflect/probe on issues.					
SL 6.1: Follow rules for collegial discussions, set/track specific goals / deadlines, and define individual roles.					
SL 6.1: Pose/Respond to questions and comments with detail.					
SL 6.1: Review key ideas expressed and demonstrate understanding through reflection/paraphrasing.					
SL 6.2: Interpret the main ideas and supporting details in diverse media and formats.					
SL 6.2: Explain how main ideas and supporting details clarify a topic, text, or issue under study.					
SL 6.3: Delineate a speaker’s argument and specific claims- which are supported by sound reasoning / sufficient evidence- which are not?					
Presentation of Knowledge					
SL 6.4: Present claims/findings in a sequential and logical manner using description, facts, and details of themes and main ideas.					
SL 6.4: Use appropriate eye contact, adequate volume, and clear pronunciation.					
SL 6.5: Include multimedia components and visual displays in presentations to clarify information.					
SL 6.6: Adapt speech to a variety of contexts and tasks, demonstrating command of formal English.					



CHECKLIST: Grade 6 Standards for Writing

Standard	Dates Taught				Notes
Types and Purposes					
W 6.1: ARGUMENTATIVE: Write arguments to support claims with clear reasons and relevant evidence.					
A: Introduce claims and organize evidence/reasons clearly.					
B: Support claims with clear reasons and relevant evidence, using accurate and credible sources.					
C: Use words, phrases, clauses to clarify the relationship among claim(s) and reasons.					
D: Establish and maintain a formal style.					
E: Provide a concluding statement or section that follows form and supports the information presented.					
W 6.2: EXPLANATORY: Write informative/explanatory texts to examine a topic and convey ideas, concepts, and information through the selection, organization, and analysis of relevant content.					
A: Introduce a topic; organize ideas using definition, classification, comparison/contrast, cause/effect; include headings, charts, tables, and multimedia to aid comprehension.					
B: Develop topic with relevant facts, definitions, concrete details, quotations, or other information/examples.					
C: Use appropriate transitions.					
D: Use precise language and domain-specific vocabulary to inform about or explain the topic.					
E: Establish and maintain a formal style.					
F: Provide a concluding statement or section that supports the information or explanation presented.					
W 6.3: NARRATIVE: Write narratives to develop real or imagined experiences or events using effective technique, relevant descriptive details, and well-structured event sequences.					
A: Engage/orient reader by establishing a context and introducing characters/narrator. Organize a logical event sequence.					
B: Use dialogue, pacing, and description, to develop events and characters.					
C: Use a variety of transitions, phrases, and clauses to convey sequence and time/setting shifts.					
D: Use precise words and phrases, descriptive details, and sensory language to capture action and convey experiences or events.					
E: Provide a conclusion that follows from the narrated experiences or events.					



Standard	Dates Taught				Notes
Production and Distribution of Writing					
W 6.4: Produce clear and coherent writing in which the development, organization, and style are appropriate to task, purpose, and audience.					
W 6.5: Write with some guidance from peers/adults.					
W 6.5: Develop and strengthen writing by planning, revising, editing, rewriting, or trying a new approach.					
W 6.6: Use technology, including the Internet, to produce, publish, cite sources, and collaborate with others.					
W 6.6: Be able to type a minimum of three pages in a single sitting.					
Research to Build and Present Knowledge					
W 6.7: Conduct short research projects to answer a question, drawing on several sources, and refocusing the inquiry when appropriate.					
W 6.8: Gather relevant information from multiple print and digital sources and assess the credibility of each source.					
W 6.8: Quote/paraphrase data while avoiding plagiarism and provide basic bibliographic information.					
W 6.9: Draw evidence from literary or informational texts to support analysis, reflection, and research.					
Range of Writing					
W 6.10: Write routinely over extended time frames (as for research, reflection, and revision) for a range of purposes and audiences.					
W 6.10: Write routinely for shorter time frames (a single sitting or a day or two) for a range of discipline-specific tasks, purposes, and audiences.					